



# Full Aluminum Digital Coreless Slim Wing Servo

## Particular Specification 詳細規格

Item No	BMS-M15H [ <b>Black Edition</b> ]
---------	-----------------------------------

### 1. Electrical Specification (Function Of The Performance) 電氣特性

1-1	Torque @ 6.0V	5.1 kg-cm / 70.8 oz-in
1-2	Torque @ 7.4V	6.4 kg-cm / 88.9 oz-in
1-3	Torque @ 8.4V	7.5 kg-cm / 104.2 oz-in
1-4	Speed @ 6.0V	0.14 sec / 60°
1-5	Speed @ 7.4V	0.11 sec / 60°
1-6	Speed @ 8.4V	0.10 sec / 60°

### 2. Apply Environmental Condition 使用環境條件

2-1	Operating Voltage Range	4.5V ~ 8.5V ( 4 ~ 6 Cell Ni-MH or 2S Li-Poly / 2S Li-Fe )
2-2	Operating Temperature Range	-20°C ~ +60°C ( -4°F ~ +140°F )
2-3	Application / Suitable	Glider series : F3K, F3P & DLG, HLG & Aircraft

### 3. Control Specification 控制特性

3-1	Control System	Digital Controller / Resolution 12-Bits ( 4096 Steps )
3-2	Dead Bend Width	0.001ms (1us)
3-3	Working Frequency & Neutral	333 Hz / 1520us
3-4	Frame Rate (Signal repeat rate)	3ms (Maximum)
3-5	Potentiometer / VR	Magnetic Sensor ( <b>Contactless</b> )
3-6	Rotating Direction	Clockwise / Pulse Traveling 1500 ~ 1900u sec
3-7	Operating Travel	90° (When 1100 ~ 1900 μ sec) [ Maximum : 900us ~ 2100us ]

### 4. Mechanical Specification 機械特性

4-1	Ball Bearing	Dual bearings
4-2	Type Gears	All Metal Gears
4-3	Motor Type	Premium Coreless Motor
4-4	Outside Case	Full Aluminum Alloy Case [ <b>Black Edition</b> ]
4-5	Horn / Gear Spline	25 Teeth (Same as F-Type)
4-6	Connected Cable Length	150 mm (5.9 in) <b>With removable Cable</b>
4-7	Connected Housing	Universal Connector (J-Type) [ <b>Black Edition</b> ]

### 5. Outline Drawing 外觀尺寸

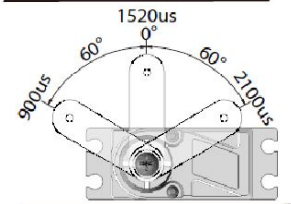
5-1	Dimension (mm)	23.2 x 10 x 24.3 mm / 0.91 x 0.39 x 0.96 in
5-2	Weight (gram)	12.0 ± 0.5 grams / 0.42 oz ( W/O Cable )



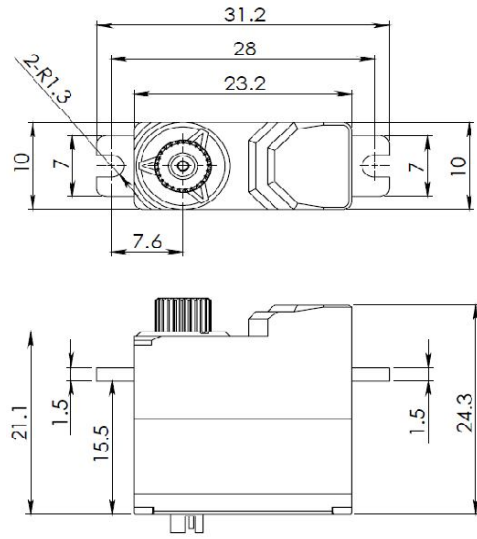
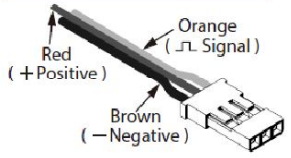
Product Picture / Dimension Sketch

**Servo Frequency 333 Hz**

**Operating Pulse Traveling**



**Connected Wire**



5-3